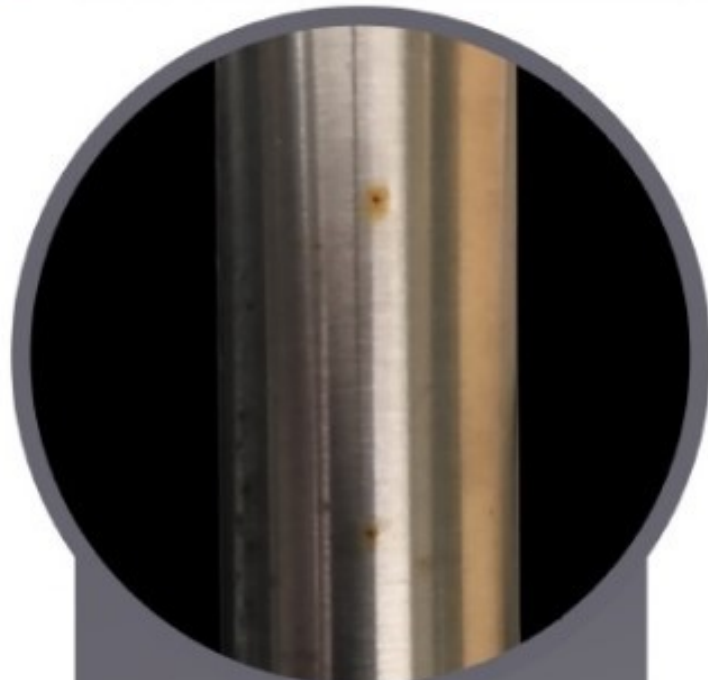


## CUSTOMER CARE GUIDE – PART 2 – HEAVY SOILING



**GUIDANCE ADVICE ON REMOVING HEAVY SOILING PUBLISHED BY THE BRITISH ASSOCIATION OF STAINLESS STEEL. ALWAYS REFER TO THE BASS 'CLEANING METHODS FOR STAINLESS STEEL'.**



Neglected Handle

### BEFORE

Rust marks or staining on stainless steels is unlikely to be the result of corrosion to the stainless steel itself. These marks are likely to result from small particles of carbon steel from the atmosphere. These are best avoided with a regular cleaning regime as per our cleaning guidelines.

However, should this be neglected use hot water with detergent or ammonia solution. Remove deposits with nylon brush and fine scouring powder if necessary. Repeat if necessary and finish with 'routine cleaning'. Abrasive scouring powder can leave scratch marks on polished surfaces. These are usually superficial and can be removed with proprietary stainless steel cleaners or, alternatively, with a car paint restorer, such as 'T-cut'. For greater detail please visit the BSSA website at [www.bssa.org.uk](http://www.bssa.org.uk).

Always test any treatment on a inconspicuous area of the handle and follow product safety instructions.

### AFTER

Restored Handle



To keep handles looking pristine for many years to come please follow our 'Maintenance Guide' supplied by British Association of Stainless Steel and retain the 'Care Label' fastened to your handle upon installation. If you do not have any of this information please request a copy from your door supplier/installer.